

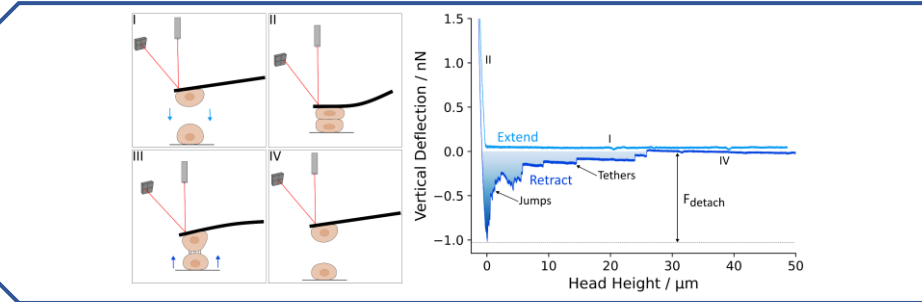
Influence of E-cadherin on epithelial cell mechanics and adhesion

Research question:

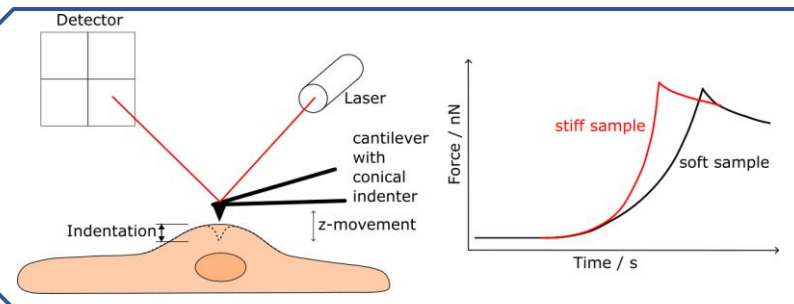
How do epithelial MDCKII cells behave when E-cadherin is knocked out?

- Wound healing experiments
- Mechanical properties of cells and AFM-Imaging
- Adhesive forces via Single Cell Force Spectroscopy
- Nanoindentation of cysts

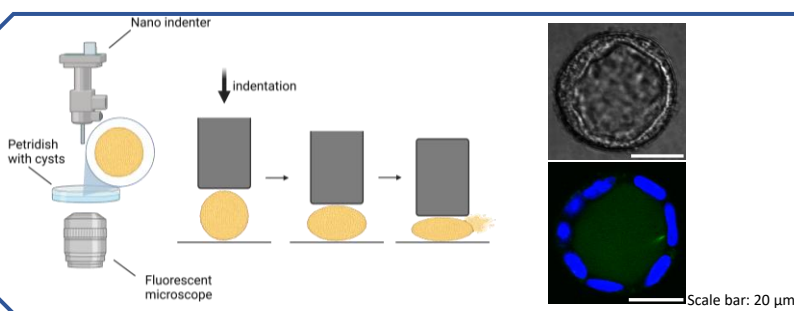
Single Cell Force Spectroscopy



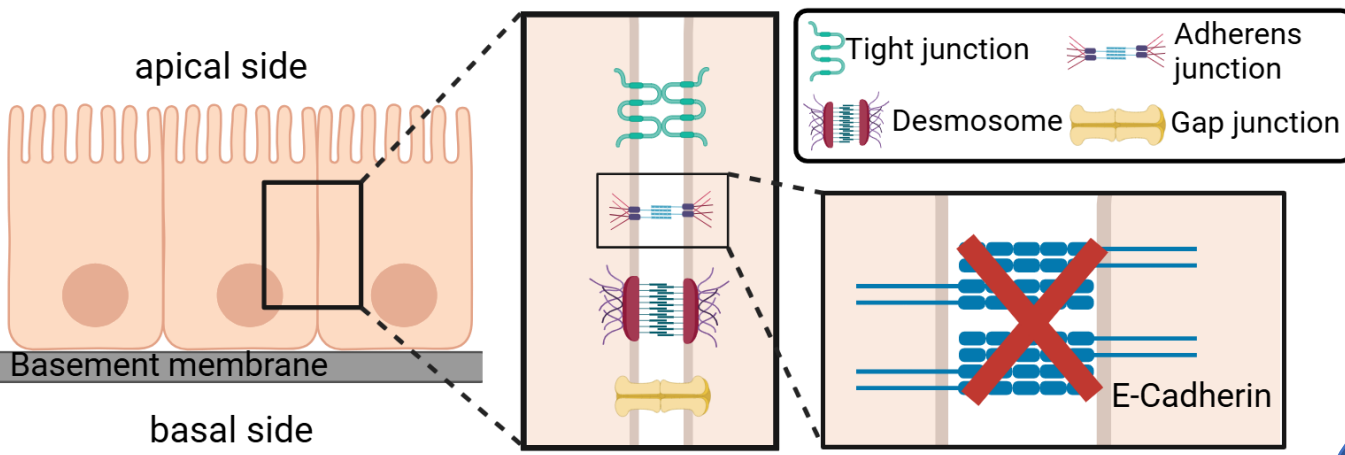
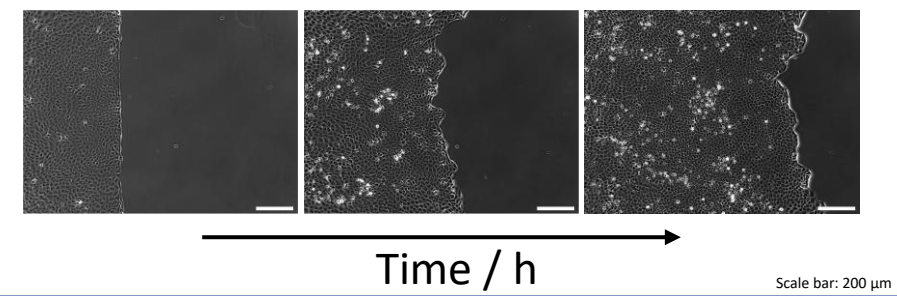
Atomic Force Microscopy



Indentation experiments



Migration dynamics



Schematic representation of an MDCKII epithelial cell layer and cell-cell junctions present