

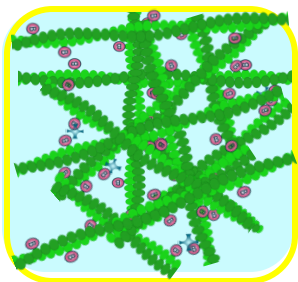
Flow Patterns in Actomyosin Droplets Routes to Self-Propulsion

How does self-propulsion depend on architecture and active force generation of a geometrically confined actomyosin network?

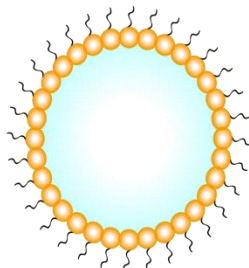
In collaboration with Kim Stöbener

Methods

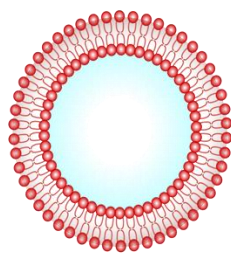
Studying Active Matter Under Confinement



Networks



W/O Droplets



GUVs

Increasing Complexity

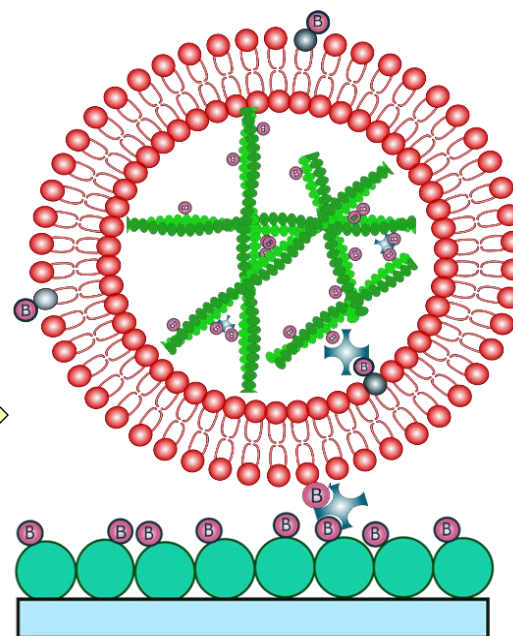
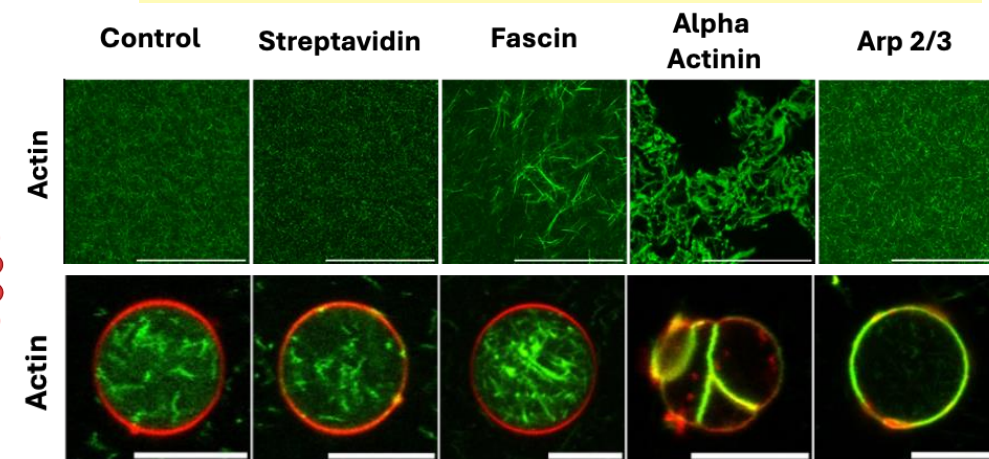


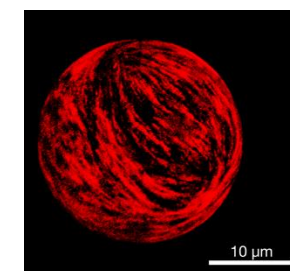
Illustration of an Experimental Setup

Research

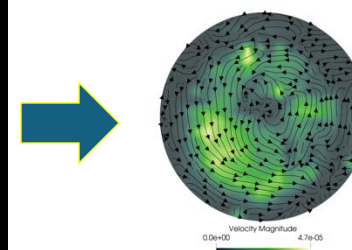
Modification of Network Architecture



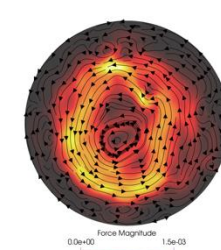
Investigation of Flow Patterns



Velocity Field



Force Field



Microrheology

